

The ASS3™ Series

The ATS and Static Switch Series

E2L™

P265E



The ASS3 Series allows the connection of Utility, Diesel Generator(s), On-Grid inverters and Battery inverters to the load via a static transfer switch. The ASS3 Series is available from 100KVA to 1000KVA per Unit.

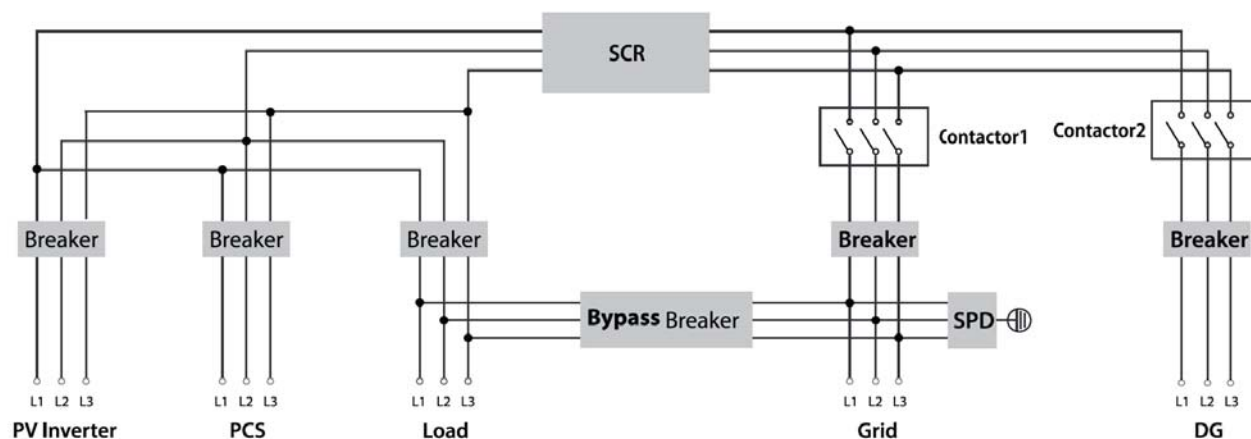
The ASS3 series is a multi- input cabinet allowing to connect a number of energy inputs and to synchronise the transfer of energy from each input to the load seamlessly.

The decision to transfer from one source to the other is taken by the Energy Management Software (EMS), which would require to operate either on solar power, battery power, utility or generator depending on the availability of each source and the status of the batteries. The decision is taken based on algorithms that would minimize total cost of energy.

The ASS3 Series is particularly designed to connect easily each of the energy inputs, the Battery inverter and any additional on-Grid inverters for applications that may require both DC and AC coupling.

The ASS3 advantage is that it includes all the protection required to comply to local electrical regulations whether international in 400V 50/60Hz or American in 480V 50/60Hz. Other powers or custom specifications may be ordered on a case by case basis.

Features



The ASS3 series is a multi- input cabinet allowing to connect a number of energy inputs and to synchronise the transfer of energy from each input to the load seamlessly.

The decision to transfer from one source to the other is taken by the Energy Management Software (EMS), which would require to operate either on solar power, battery power, utility or generator depending on the availability of each source and the status of the batteries. The decision is taken based on algorithms that would minimize total cost of energy.

The ASS3 Series is particularly designed to connect easily each of the energy inputs, the Battery inverter and any additional on-Grid inverters for applications that may require both DC and AC coupling.

The ASS3 advantage is that it includes all the protection required to comply to local electrical regulations whether international in 400V 50/60Hz or American in 480V 50/60Hz. Other powers or custom specifications may be ordered on a case by case basis.

- **Seamless Integration with existing Infrastructure**
- **Compact Design**
- **Includes all the breakers needs**
- **IP 20**
- **RS485, CAN-BUS**
- **Short Circuit Protected**
- **Over Temperature Protection**
- **Lightning Protection**
- **Build-in Manual By pass breaker**
- **Wide Operating Temperature**
- **Complies to International and American Electrical Codes.**

Technical Specifications - International Models

Technical Specifications for Units design for International market
in 400Vac, 50/60Hz:

	ASS3-100KI	ASS3-250KI	ASS3-500KI	ASS3-630KI	ASS3-1000KI
Rated voltage	400V	400V	400V	400V	400V
Rated current	144A	360A	722A	910A	1444A
Rated frequency	50Hz	50Hz	50Hz	50Hz	50Hz
Rated power	100KVA	250KVA	500KVA	630KVA	1000KVA
Max. current	175A	435A	866A	1091A	1732A
Transfer between on/off grid	Automatic≤10ms	Automatic≤10ms	Automatic≤10ms	Automatic≤10ms	Automatic≤10ms
Power limit(grid)	Yes	Yes	Yes	Yes	Yes
PV inverter breaker	250A	630A	1250A	1250A	2000A/3P
PCS breaker	250A	630A	1250A	1250A	2000A/3P
Grid breaker	250A	630A	1250A	1250A	2000A/3P
Load breaker	250A	630A	1250A	1250A	2000A/3P
Bypass breaker	250A	630A	1250A	1250A	1600A/3P
DG breaker	250A	630A	1250A	1250A	2000A/3P
Lightning protection	Type II	Type II	Type II	Type II	Type II
Protection degree	IP20	IP20	IP20	IP20	IP20
Relative humidity	0-95% non-condensing	0-95% non-condensing	0-95% non-condensing	0-95% non-condensing	0-95% non-condensing
Operating temperature	-25 °C~+55 °C	-25 °C~+55 °C	-25 °C~+55 °C	-25 °C~+55 °C	-25 °C~+55 °C
Dimension (W/H/D)	700/1630/500mm	700/1800/500mm	1600/1900/800mm	1600/1900/800mm	2850/2100/800mm
Weight	135kg	205kg	900kg	1040kg	1500kg
Communication	RS485/CAN	RS485/CAN	RS485/CAN	RS485/CAN	RS485/CAN

Technical Specifications - American Models

Technical Specifications for Units design for American market in
480Vac , 50/60Hz:

	ASS3-100KD	ASS3-250KD	ASS3-500KD	ASS3-630KD	ASS3-1000KD
Rated voltage	480V	480V	480V	480V	480V
Rated current	120A	301A	601A	758A	1202A
Rated frequency	50Hz	50Hz	50Hz	50Hz	50Hz
Rated power	100KVA	250KVA	500KVA	630KVA	1000KVA
Max. current	175A	435A	866A	1091A	1443A
Transfer between on/off grid	Automatic≤10ms	Automatic≤10ms	Automatic≤10ms	Automatic≤10ms	Automatic≤10ms
Zero export function	Opt	Opt	Opt	Opt	Opt
Power limit(grid)	Opt	Opt	Opt	Opt	Opt
PV inverter breaker	250A	630A	1250A	1250A	2000A/3P
PCS breaker	250A	630A	1250A	1250A	2000A/3P
Grid breaker	250A	630A	1250A	1250A	2000A/3P
Load breaker	250A	630A	1250A	1250A	2000A/3P
Bypass breaker	250A	630A	1250A	1250A	1600A/3P
DG breaker	Opt	Opt	Opt	Opt	Opt
Lightning protection	Type II	Type II	Type II	Type II	Type II
Protection degree	Type 1	Type 1	Type 1	Type 1	Type 1
Relative humidity	0-95% non-condensing	0-95% non-condensing	0-95% non-condensing	0-95% non-condensing	0-95% non-condensing
Operating temperature	-25 °C~+55 °C	-25 °C~+55 °C	-25 °C~+55 °C	-25 °C~+55 °C	-25 °C~+55 °C
Dimension (W/H/D)	700/1630/500mm	700/1800/500mm	1600/1900/800mm	1600/1900/800mm	2850/2100/800mm
Weight	135kg	205kg	900kg	1040kg	1500kg

Hybrid



Storage Inverter



Battery



and much more ...

E24 Modular Range Of Products For Building Easy, Flexible & Evolutive Solutions

E24 products dynamically evolve with the lifestyle and work style of its customers while easing the installation process.

E24 products are conceived in modules allowing for an easy upgrade to adjust with the needs of the customers. Being modular and easy to connect E24 products allow installers to easily configure the required modules for an optimal solution while offering easy upgrade options.



Ordering Information

Ref. Number	Description
ASS3-100KI	Three Phases Static Switch 100KVA, 400V, 50/60 Hz with RS485/CAN
ASS3-100KD	Three Phases Static Switch 100KVA, 460V, 50/60 Hz with RS485/CAN
ASS3-250KI	Three Phases Static Switch 250KVA, 400V, 50/60 Hz with RS485/CAN
ASS3-250KD	Three Phases Static Switch 250KVA, 460V, 50/60 Hz with RS485/CAN
ASS3-500KI	Three Phases Static Switch 500KVA, 400V, 50/60 Hz with RS485/CAN
ASS3-500KD	Three Phases Static Switch 500KVA, 460V, 50/60 Hz with RS485/CAN
ASS3-630KI	Three Phases Static Switch 630KVA, 400V, 50/60 Hz with RS485/CAN
ASS3-630KD	Three Phases Static Switch 630KVA, 460V, 50/60 Hz with RS485/CAN
ASS3-1000KI	Three Phases Static Switch 1000KVA, 400V, 50/60 Hz with RS485/CAN
ASS3-1000KD	Three Phases Static Switch 1000KVA, 460V, 50/60 Hz with RS485/CAN



www.e24solutions.com

